



Digitalization: your last opportunity to move forward
from "document centric" to "data centric" projects & life cycle execution

ANIMP Conference, April 19th 2017

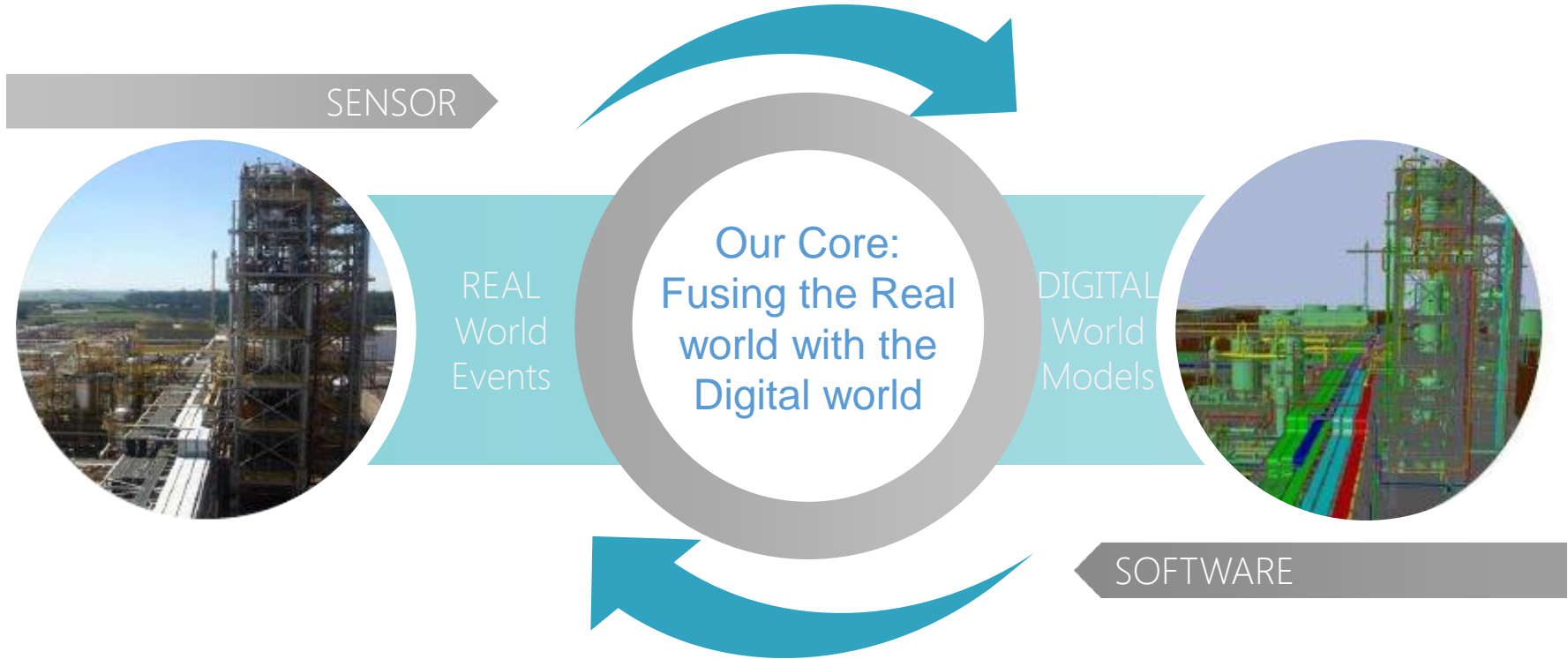
Maurizio M. Granata – Business Development Executive
EMIA – Materials, Costs, & Project Execution Management



HEXAGON in Brief

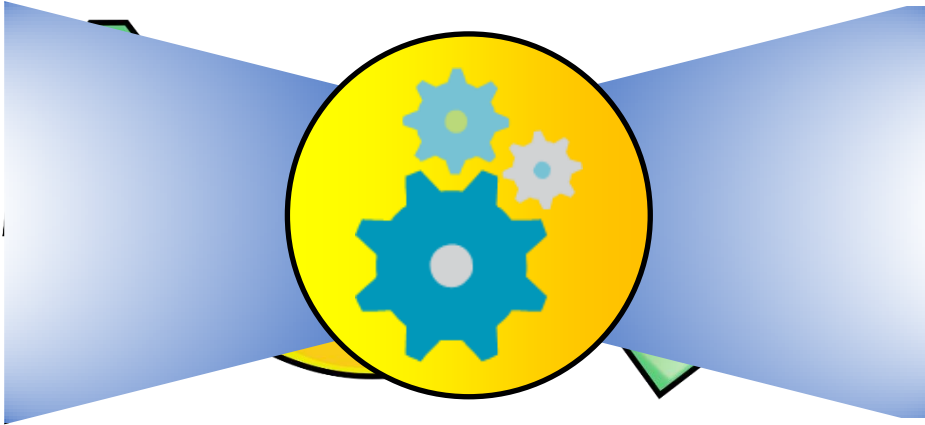


Source: Bloomberg Markets





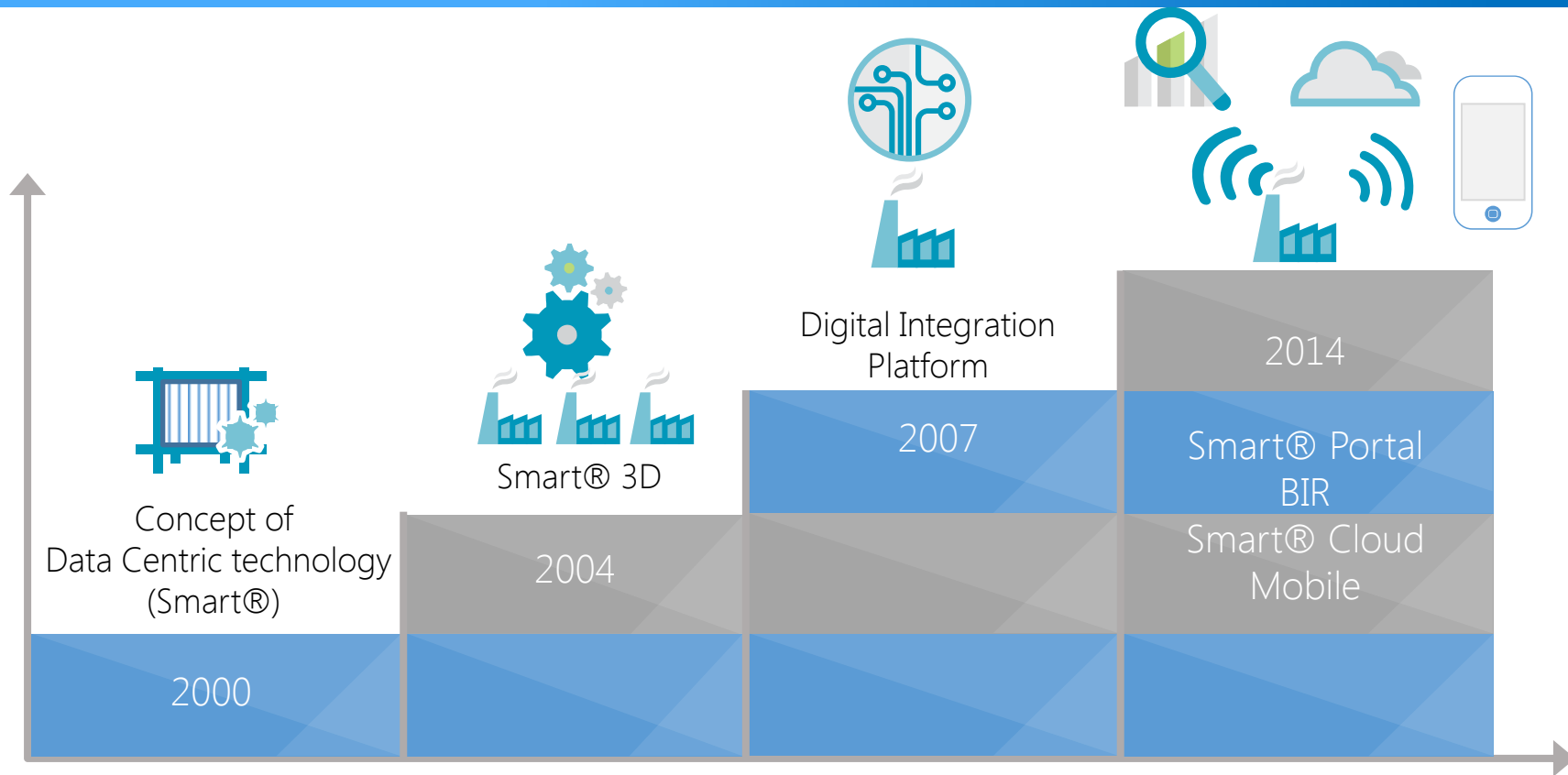
What Digital Innovation does imply



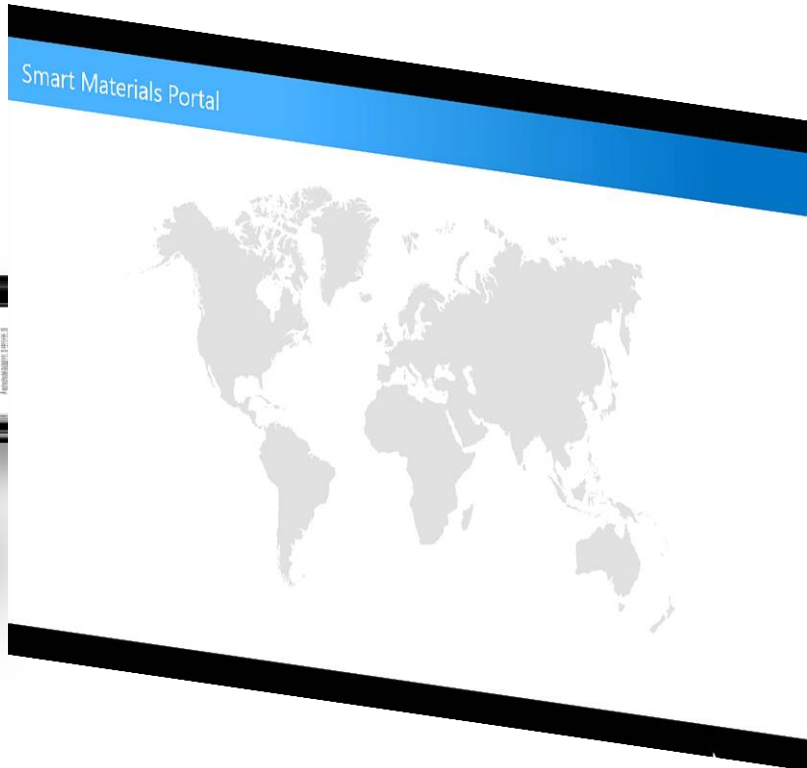
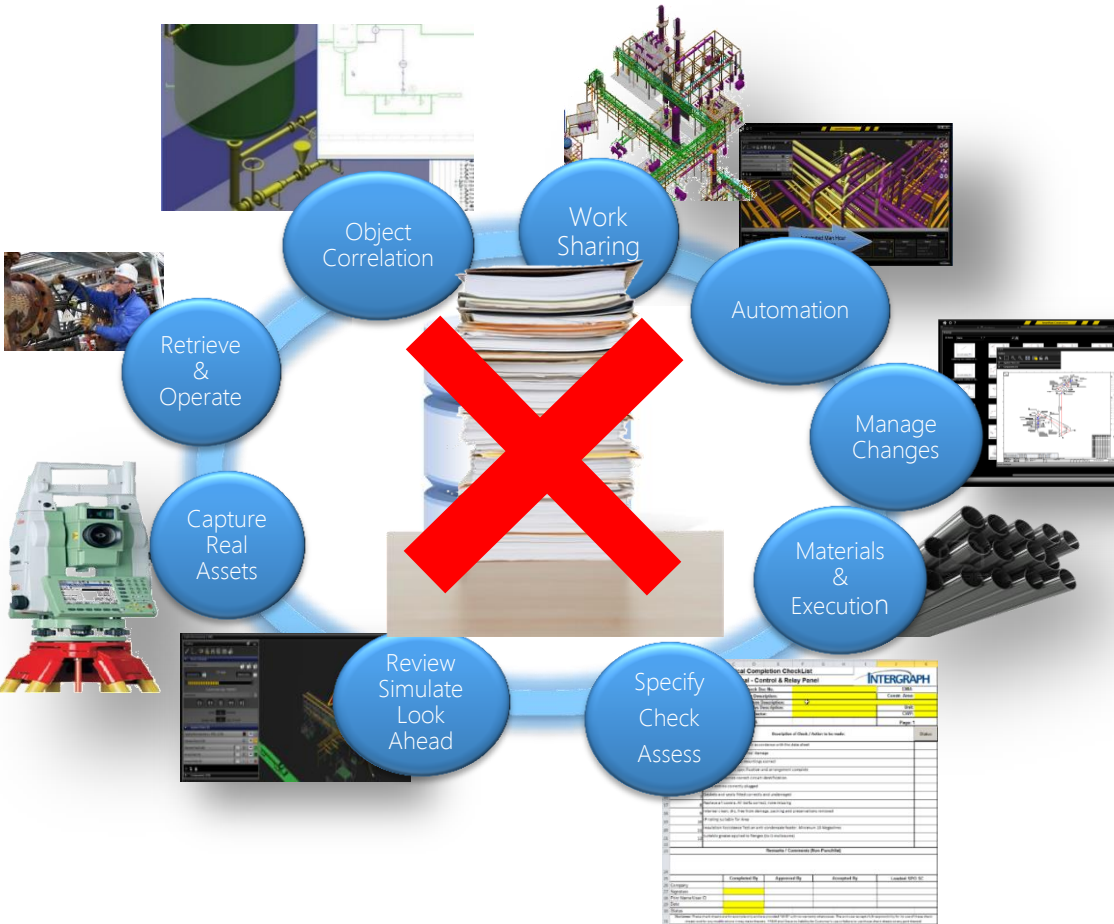
CUSTOMER SERVICE



Digitalization Path: Behind

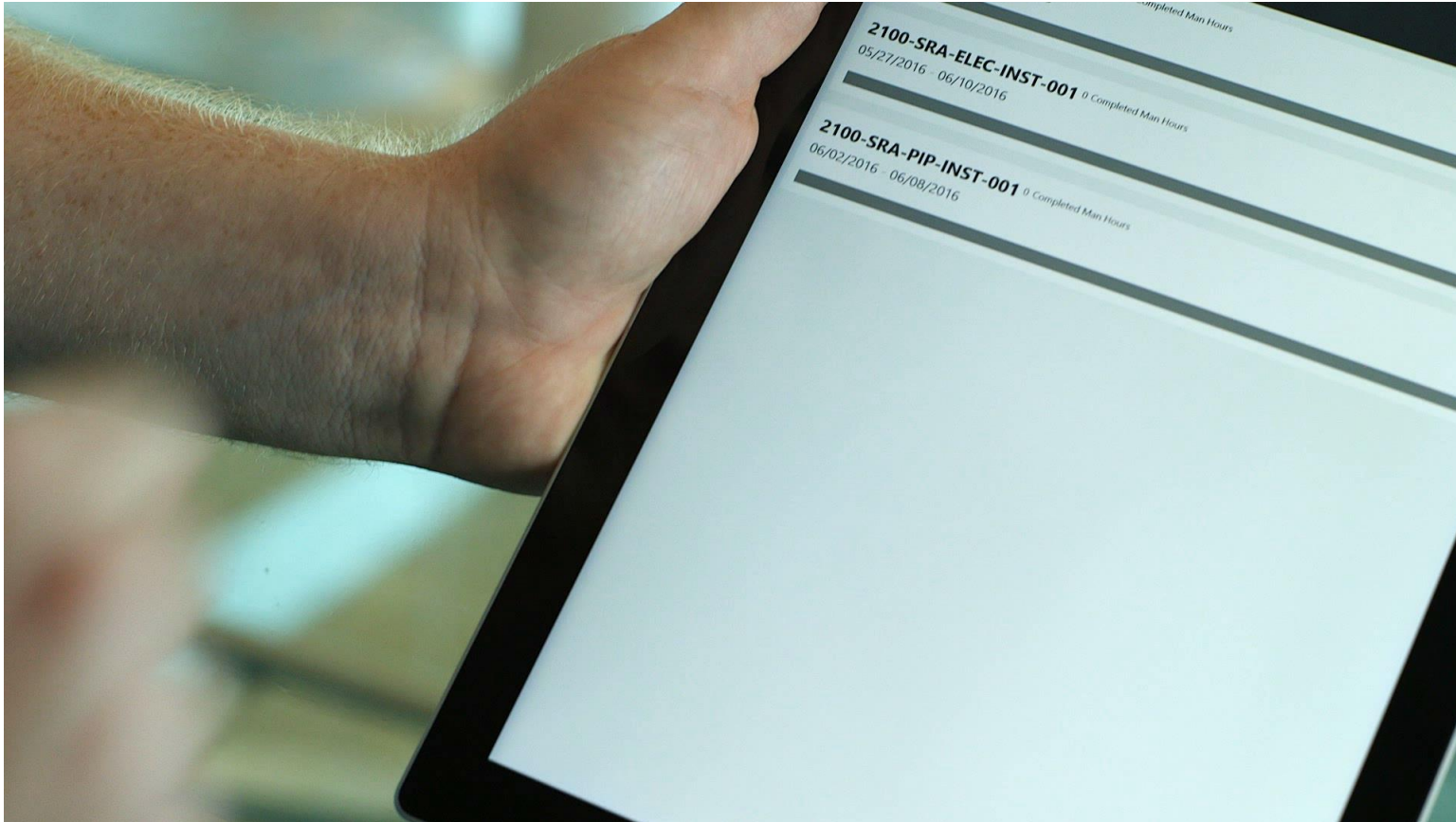


Digitalization Path: Now

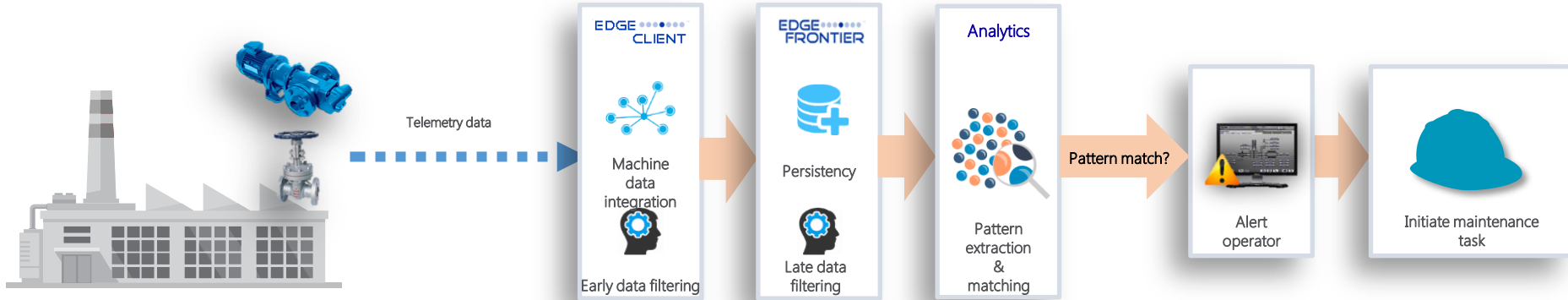


The logo features the word "INTERGRAPH" in a bold, white, sans-serif font. A white swoosh underline starts under the 'I', arches over the 'R', and ends under the 'H'. A registered trademark symbol (®) is located to the right of the word.

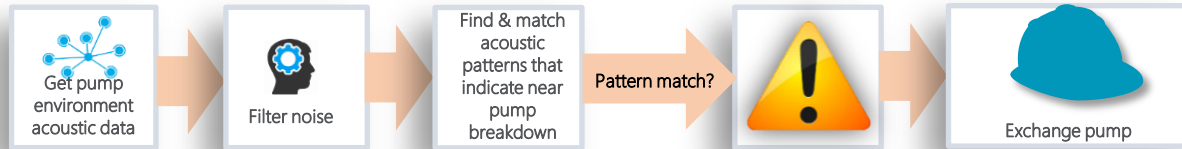
INTERGRAPH®



Digitalization Path: Now



Example:



Smart® Enterprise Portal

The screenshot displays the Smart Enterprise Portal interface. At the top, a browser address bar shows the URL: `http://hexws2k12.local/sep/truView.html#/PAP/view?Id=6FXW004A&type=Intergraph.SPF.Server.API.Model.FusionDocument&`. The page title is "Intergraph Smart™ Enterpri...".

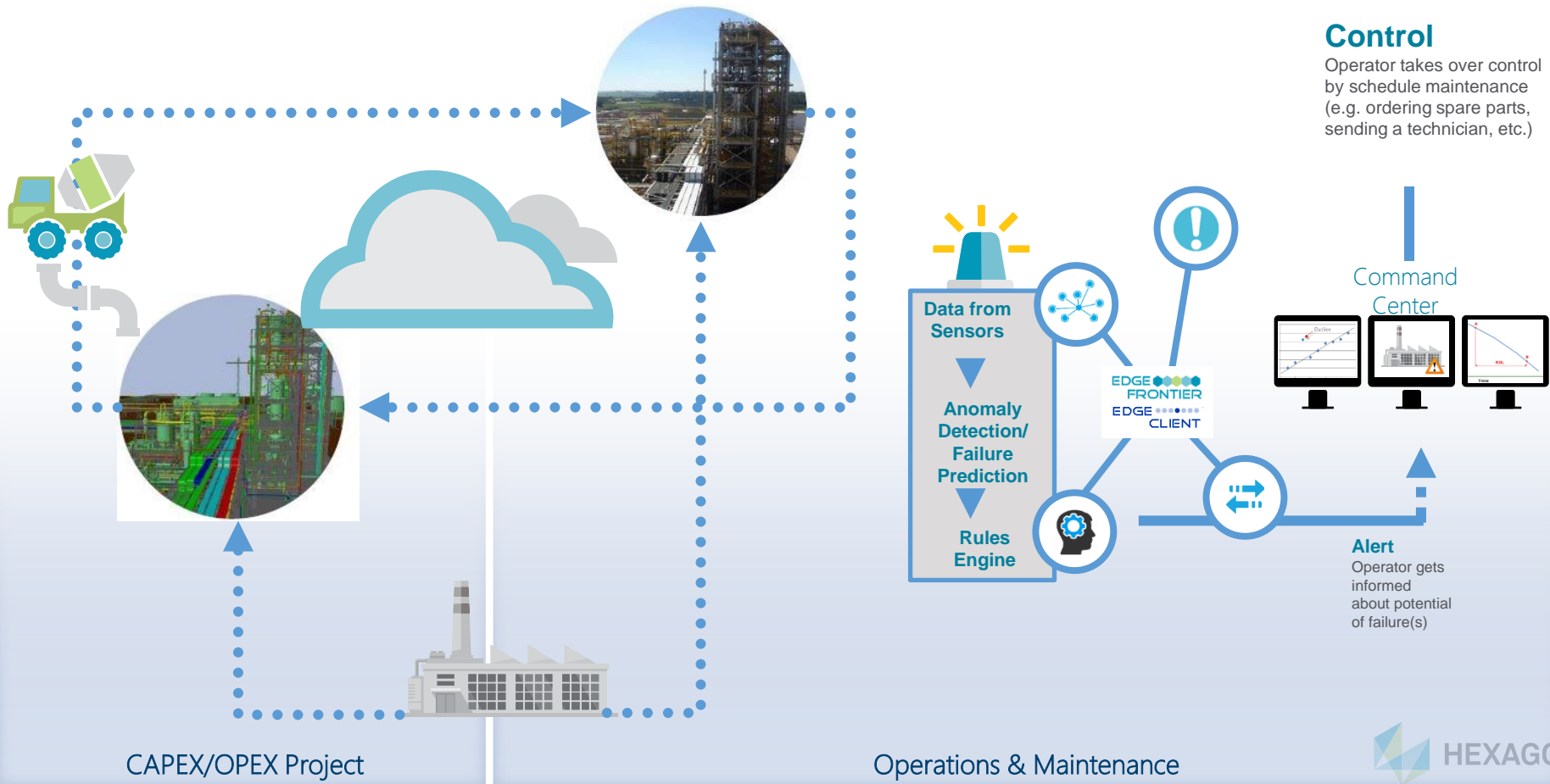
The main interface features a dark blue header with the text "Smart Enterprise Portal" and a "View" button. Below the header is a navigation sidebar on the left with the following items:

- PAP
- FusionAdministrator
- Home
- Search
- Reports
- History
- Administration
- About
- Help

The central area displays a 3D model of an industrial facility, likely a refinery or chemical plant, rendered in a perspective view. The model shows a complex network of pipes, tanks, and structural supports. A "Leica TruView" logo is visible in the top left corner of the 3D view. On the right side of the 3D view, there are navigation controls including a search icon, a home icon, a refresh icon, and a search icon. A yellow warning sign is visible in the 3D model.



Digitalization Path: Now & Next



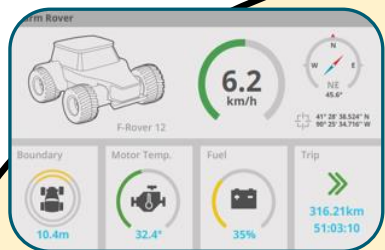
CAPEX/OPEX Project

Operations & Maintenance

Digitalization Path: Now & Next

Smart Convergence: Integrated System of Systems

Connectivity and Orchestration Platform

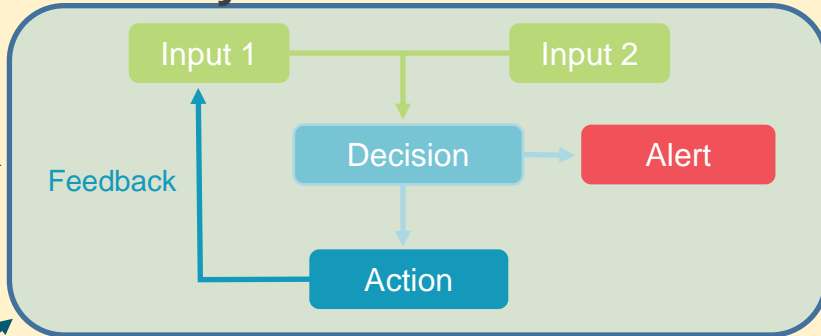


Monitoring Dashboard

Edge Client

Edge Client

Edge Client



Cloud Storage & Analytics

Edge Client

Edge Client



Vehicle Fleet



Sensors & Devices



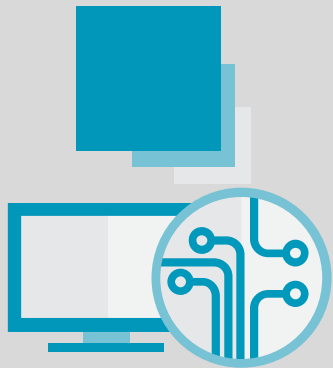
Mobile Sensors



Mobile Devices

Digitalization Path: Now & Next

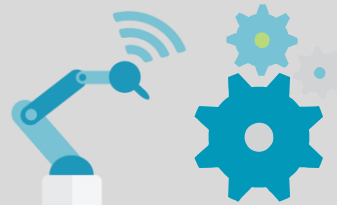
Smart Convergence: Integrated System of Systems



Legacy Systems
and Devices



Siloed Data



Invisible Machine
and Sensor Data



Disparate data
forms

The Future of Engineering Today

Digitalization: your last opportunity to move forward
*from "document centric" to "data centric" projects & life cycle
execution*

Thank you

Maurizio M. GRANATA

Mob. +39 348 2727834

email maurizio.granata@intergraph.com

Skype MMGRANATA

